



TCF Ep. 425 - Dotan Saguy

189 views

Like, Comment, Share, and other interaction icons



The Candid Frame Published on Jun 24, 2018

SUBSCRIBE 12K

Dotan Saguy was born in a small kibbutz five miles south of Israel's Lebanese border. He grew up in a diverse working-class Parisian suburb, lived in Lower Manhattan during 9/11 and moved to Los Angeles in 2003.

SHOW MORE

0 Comments SORT BY



Add a public comment...

Up next

AUTOPLAY



The Evolution of a Street Photographer with Dotan Saguy B and H 52K views



TCF Ep. 431 - Melissa Spitz The Candid Frame 139 views



Why I'm ditching full frame cameras James Popsys 536K views



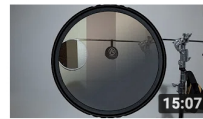
Sight & Insight: Photographer Sam Abell's Art of Simplicity Shawn Rahman 9.7K views



A Guide to Street Photography: Matt Stuart, manners and... Engadget 121K views



Three Tips for Using a Wide Angle Lens: Exploring... Adorama 366K views



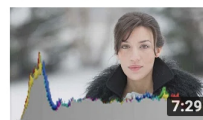
The Neutral Density Filter Shootout Fstoppers 147K views



Inspiration from Sam Abell Santa Fe Photographic Workshops 10K views



NOBODY CARES ABOUT YOUR PHOTOGRAPHY The Art of Photography 471K views



Exposure Compensation and Spot Metering: Fixing... Tony & Chelsea Northrup 831K views



Nikon D850 Camera Review | The Good - The Bad - The Ugly Landscape Photography iQ 48K views



How to get yourself noticed as a Professional Photographer Karl Taylor 369K views



Landscape Photography On Location: Iceland. Snaefellsne... Thomas Heaton 268K views



Polarizer Challenge: Proving Polarizers are Worth... Tony & Chelsea Northrup 91K views



Working with Harsh Light Landscape Photography iQ 7K views



Best Lenses for Wedding Photography

Taylor Jackson ✓
37K views



Street Photography: Learning from the Personal

The Candid Frame
657 views
New



How Do I Get Work With No Experience?

The Art of Photography ✓
71K views



Outdoor Portraits Essentials: Natural Light Photography, Fill...

Tony & Chelsea Northrup ✓
975K views



The Simple Math of Correct Exposure

Allversity
1M views

SHOW MORE